

Corporate Data (As of March 31, 2009)

Established: June 1957
Paid-in Capital: ¥48,592 million
Employees: 12,358
Home Page Address: <http://world.casio.com/>

Domestic Offices

Head Office

6-2, Hon-machi 1-chome,
Shibuya-ku, Tokyo 151-8543

IR Department

Tel: (03) 5334-4803

R&D Centers

Hamura Research & Development Center

2-1, Sakae-cho 3-chome
Hamura City, Tokyo 205-8555
Tel: (042) 579-7111

Hachioji Research & Development Center

2951-5, Ishikawa-cho,
Hachioji City, Tokyo 192-8556
Tel: (042) 639-5111

Overseas Offices

Casio America, Inc.

570 Mt. Pleasant Avenue,
Dover, New Jersey 07801,
United States
Tel: 973-361-5400

Casio Europe GmbH

Casio-Platz 1 22848
Norderstedt, Germany
Tel: 040-528-65-0

Investor Information (As of March 31, 2009)

Stock Exchange Listings

Tokyo

Transfer Agent

The Sumitomo Trust and Banking Co., Ltd.

Number of Shares

Authorized: 471,693,000 shares
Issued: 279,020,914 shares

Number of Shareholders

59,486

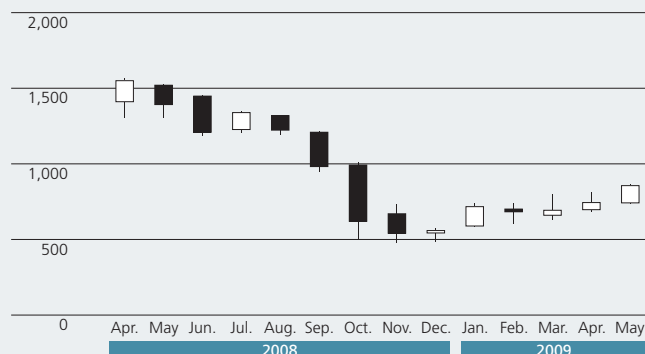
Principal Shareholders

	Shareholdings (thousands)	% of outstanding share*
Japan Trustee Services Bank, Ltd. (Trust Account 4G)	17,241	6.22
The Master Trust Bank of Japan, Ltd. (Trust Account)	16,324	5.88
Nippon Life Insurance Company	13,669	4.93
Japan Trustee Services Bank, Ltd. (Trust Account)	11,139	4.02
Casio Bros. Corp.	10,000	3.61
Japan Trustee Services Bank, Ltd. (The Sumitomo Trust and Banking Co., Ltd. Retrust Portion, Sumitomo Mitsui Banking Corp. Pension Trust Account)	9,865	3.56
Sumitomo Mitsui Banking Corp.	6,821	2.46
The Bank of Tokyo-Mitsubishi UFJ, Ltd.	5,097	1.84
Trust & Custody Services Bank, Ltd. (Securities Investment Trust Account)	4,929	1.78
Toshio Kashio	4,862	1.75

* Outstanding shares are calculated after deduction of shares in treasury (1,629,789).

Share Price

(Yen)



Breakdown of Shareholders

