

Investor Information

(As of March 31, 2006)

Stock Exchange Listings

Tokyo

Transfer Agent

The Sumitomo Trust and Banking Corporation
Stock Transfer Agency Dept.
4-4, Marunouchi 1-chome, Chiyoda-ku,
Tokyo 100-8233, Japan

Number of Shares

Authorized: 471,693,000 shares
Issued: 270,442,868 shares

Number of Shareholders

28,876

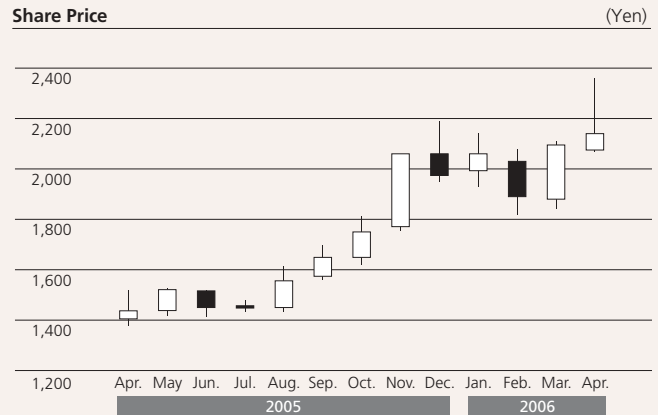
Principal Shareholders

	Shareholdings (thousands)	Outstand- ing voting share
Japan Trustee Services Bank, Ltd. (Trust Account)	21,164	7.97%
The Master Trust Bank of Japan, Ltd. (Trust Account)	19,841	7.47
Nippon Life Insurance Company	13,669	5.15
Casio Bros. Corp.	10,000	3.77
Japan Trustee Services Bank, Ltd. (The Sumitomo Trust and Banking Co., Ltd. Retrusted Portion, Sumitomo Mitsui Banking Corp. Pension Trust Account)	9,865	3.71
Sumitomo Mitsui Banking Corp.	6,789	2.56
Toshio Kashio	5,344	2.01
The Bank of Tokyo-Mitsubishi UFJ, Ltd.	5,077	1.91
Mitsui Sumitomo Insurance Co., Ltd.	4,122	1.55
Yukio Kashio	3,683	1.39

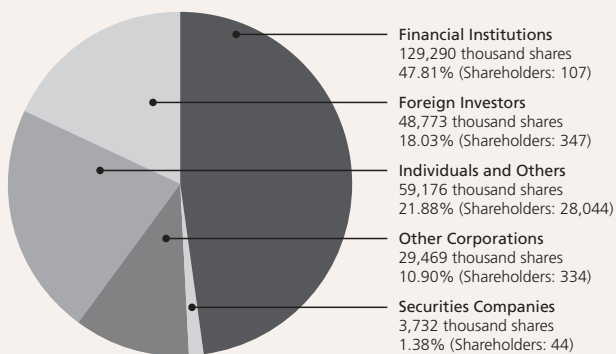
Share Price Range

Year	Month	Yen		
		High	Low	
2005	Apr.	¥1,517	¥1,377	
	May	1,526	1,416	
	Jun.	1,520	1,416	
	Jul.	1,480	1,434	
	Aug.	1,613	1,432	
	Sep.	1,695	1,559	
	Oct.	1,813	1,620	
	Nov.	2,060	1,756	
	Dec.	2,190	1,948	
	2006	Jan.	2,140	1,927
		Feb.	2,080	1,820
		Mar.	2,110	1,843
Apr.		2,360	2,070	

Share Price



Breakdown of Shareholders



Breakdown of Shareholdings by Size

