

Investor Information

(As of March 31, 2005)

Stock Exchange Listings

Tokyo

Transfer Agent

The Sumitomo Trust and Banking Corporation
Stock Transfer Agency Dept.
4-4, Marunouchi 1-chome, Chiyoda-ku,
Tokyo 100-8233, Japan

Number of Shares

Authorized: 471,693,000 shares
Issued: 270,442,868 shares

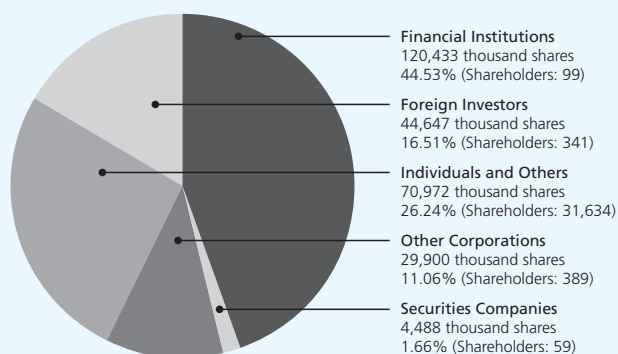
Number of Shareholders

32,522

Principal Shareholders

	Shareholdings (thousands)	Outstand- ing voting share
The Master Trust Bank of Japan, Ltd. (Trust Account)	19,321	7.29%
Japan Trustee Services Bank, Ltd. (Trust Account)	13,950	5.26
Nippon Life Insurance Company	13,669	5.16
Casio Bros. Corp.	10,000	3.77
Japan Trustee Services Bank, Ltd. (The Sumitomo Trust and Banking Company Retrusted Portion, Sumitomo Mitsui Banking Corp. Pension Trust)	9,865	3.72
Sumitomo Mitsui Banking Corp.	6,789	2.56
Toshio Kashio	5,327	2.01
Sumitomo Life Insurance Company	4,206	1.59
Mitsui Sumitomo Insurance Co., Ltd.	4,122	1.55
Yukio Kashio	3,682	1.39

Breakdown of Shareholders

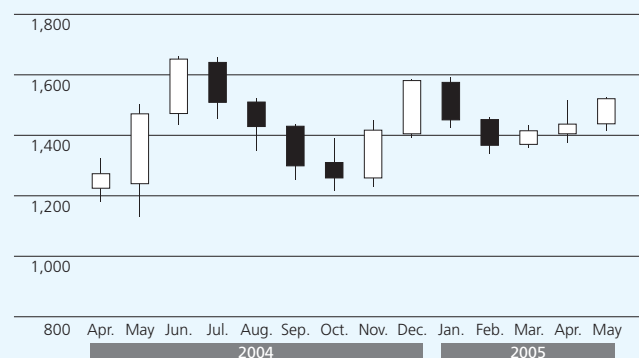


Share Price Range

Year	Month	Yen		
		High	Low	
2004	Apr.	¥1,323	¥1,180	
	May	1,501	1,130	
	Jun.	1,663	1,435	
	Jul.	1,657	1,453	
	Aug.	1,521	1,349	
	Sep.	1,436	1,254	
	Oct.	1,392	1,218	
	Nov.	1,448	1,229	
	Dec.	1,587	1,392	
	2005	Jan.	1,593	1,425
		Feb.	1,460	1,339
		Mar.	1,435	1,360
Apr.		1,517	1,377	
May		1,526	1,416	

Share Price

(Yen)



Breakdown of Shareholdings by Size

