

INVESTOR Information

Stock Exchange Listings

Tokyo, Osaka, Amsterdam, and Frankfurt

Transfer Agent

The Sumitomo Trust and Banking Corporation
Stock Transfer Agency Dept.
4-4, Marunouchi 1-chome, Chiyoda-ku,
Tokyo 100-8233, Japan

Number of Shares

Authorized: 472,258,000 shares
Issued: 271,007,868 shares

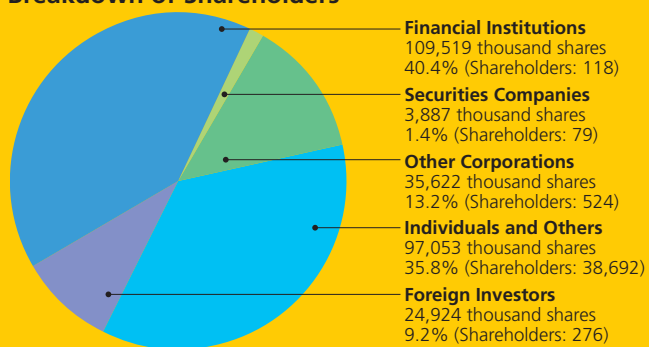
Number of Shareholders

39,689

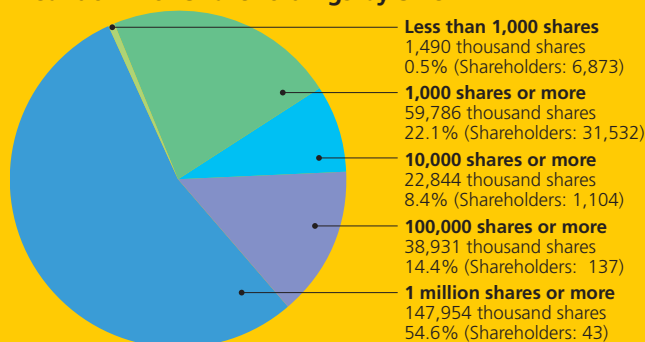
Principal Shareholders

	Shareholdings (thousands)	% of total
Sumitomo Mitsui Banking Corp.	13,558	5.00%
Nippon Life Insurance Company	12,170	4.49
Casio Bros. Corp.	10,000	3.69
Japan Trustee Services Bank, Ltd. (Trust Account)	8,337	3.08
UFJ Bank Limited	5,947	2.19
The Mitsubishi Trust and Banking Corp. (Trust Account)	5,783	2.13
Toshio Kashio	5,367	1.98
Sumitomo Life Insurance Company	5,282	1.95
Mitsui Sumitomo Insurance Co., Ltd.	4,582	1.69
The Dai-ichi Kangyo Bank, Ltd.	4,569	1.69

Breakdown of Shareholders



Breakdown of Shareholdings by Size

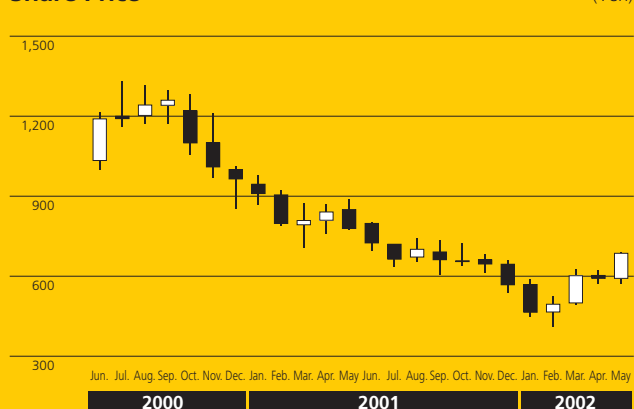


(As of March 31, 2002)

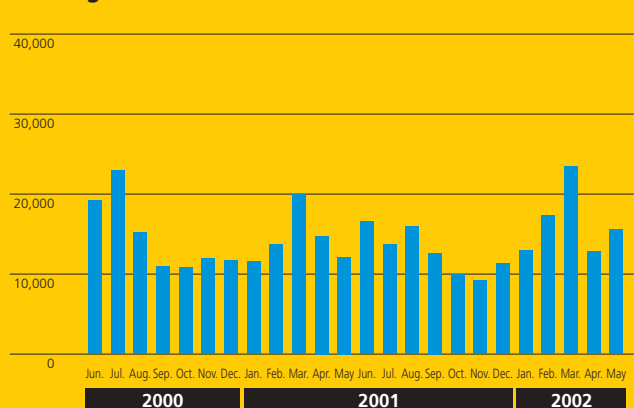
Share Price Range

Year	Month	Yen		
		High	Low	
2001	Apr.	¥870	¥758	
	May	888	775	
	Jun.	803	698	
	Jul.	720	637	
	Aug.	741	653	
	Sep.	734	605	
	Oct.	722	638	
	Nov.	681	612	
	Dec.	660	539	
	2002	Jan.	587	448
		Feb.	526	410
		Mar.	626	494
Apr.		622	570	
May		703	572	

Share Price



Trading Volume



(As of May 31, 2002)