

DIRECTORS AND CORPORATE AUDITORS

*Corporate Vice President

CORPORATE DATA

Toshio Kashio
*Chairman and Representative
Director*

Kazuo Kashio*
President and CEO

Yukio Kashio*
*Executive Vice President and
Representative Director*

Senior Managing Directors
Shigeki Maeno*
Shinichi Onoe*

Managing Directors
Masayuki Hakata*
Osamu Shimizu*
Yozo Suzuki*
Akinori Takagi*

Directors
Noriyuki Kakihisa*
Yoshio Ono*
Masami Chikauchi*

Corporate Auditors
Takeshi Honda
Atsuhito Takayama
Hironori Daitoku

Corporate Vice Presidents

Yoshiaki Suzuki
Tadashi Takasu
Naomitsu Satoh
Iwao Nakamura
Shuitsu Satoh
Chikafusa Miyamoto
Kiyotaka Hachiya
Atsushi Mawatari
Koichi Takeichi
Tomimoto Umeda
Akira Kashio
Shinji Yamamoto

(As of June 28, 2001)

Established
June 1957

Paid-in Capital
¥41,549 million

Employees
18,119

Homepage Address
<http://world.casio.com>

(As of March 31, 2001)

DOMESTIC OFFICES

Head Office
6-2, Hon-machi 1-chome,
Shibuya-ku, Tokyo 151-8543

Accounting Division
Tel: (03) 5334-4852

**International Sales and
Marketing Headquarters**

Consumer Products Dept.
Asia Pacific Section
Tel: (03) 5334-4837
Middle East•Africa Section
Tel: (03) 5334-4562
Latin America Section
Tel: (03) 5334-4320
Electronic Musical Instrument
Section
Tel: (03) 5334-4906

Timepiece Dept.
Asia Pacific Section
Middle East•Africa Section
Latin America Section
Tel: (03) 5334-4981

System Products Dept.
MNS Section
Store Automation Section
Tel: (03) 5334-4771

**Multinational Business
Management Division**
Tel: (03) 5334-4896

R&D CENTERS AND LABORATORIES

**Hamura Research & Development
Center**
3-2-1, Sakae-cho, Hamura City,
Tokyo 205-8555
Tel: (0425) 79-7111

**Tokyo Product Control and
Technical Center**
2-229, Sakuragaoka, Higashiyamato
City, Tokyo 207-8501
Tel: (0425) 63-1111

**Ome Product Control and Technical
Center**
3-10-6, Imai, Ome City, Tokyo 198-8555
Tel: (0428) 32-1551

Hachioji Laboratory
2951-5, Ishikawa-cho, Hachioji City,
Tokyo 192-8556
Tel: (0426) 44-6111

Casio Manufacturing Corporation
US R&D Center
181 Metro Drive, Suite 400,
San Jose, CA 95110, U.S.A.
Tel: (408) 451-9001

OVERSEAS OFFICES

Casio European Headquarters
Unit 6, 1000 North Circular Road,
London NW2 7JD, U.K.
Tel: 020-8450-9131

**Casio Computer Co., Ltd.
Beijing Office**
JingTai Tower, Room No.803, 24
JianGuoMen Wai Street, Beijing,
P.R.C. 100022
Tel: 10-6515-5275

**Casio Computer Co., Ltd.
Moscow Representative Office**
25/3, Tsvetnoi Boulevard, Moscow
103051, Russia
Tel: 095-725-6466

**Casio Computer Co., Ltd.
Dubai Representative Office**
P.O. Box 61117, Jebel Ali Free Zone,
Dubai, U.A.E.
Tel: 04-8817718

(As of June 2001)

INVESTOR INFORMATION

Stock Exchange Listings

Tokyo, Osaka, Amsterdam and Frankfurt

Transfer Agent

The Sumitomo Trust and Banking Corporation
Stock Transfer Agency Dept.
4-4, Marunouchi 1-chome, Chiyoda-ku, Tokyo 100-8233, Japan

Number of Shares

Authorized: 472,829,000 Shares

Issued: 271,578,868 Shares

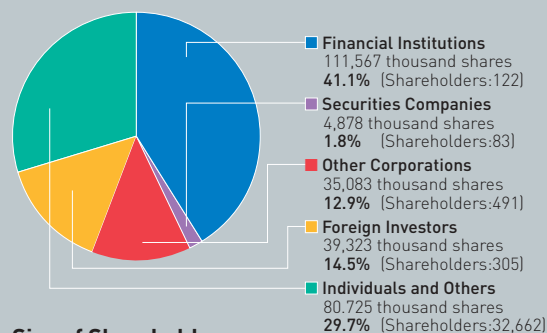
Number of Shareholders

33,663

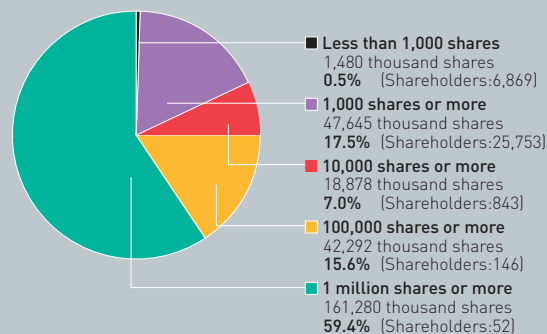
Principal Shareholders

Principal Shareholders	Shareholdings	% of total
Casio Bros. Corp.	10,000 thousand	3.68%
Nippon Life Insurance Company	9,171	3.38
Japan Trustee Services Bank, Ltd. (Trust Account)	9,160	3.37
The Sakura Bank, Ltd.	6,789	2.50
The Sumitomo Bank, Ltd.	6,789	2.50
The Mitsubishi Trust and Banking Corp. (Trust Account)	6,252	2.30
The Sanwa Bank, Ltd.	5,947	2.19
Toshio Kashio	5,367	1.98
Sumitomo Life Insurance Company	5,282	1.94
The Dai-Ichi Kangyo Bank, Ltd.	4,569	1.68

Breakdown of Shareholders



Size of Shareholders

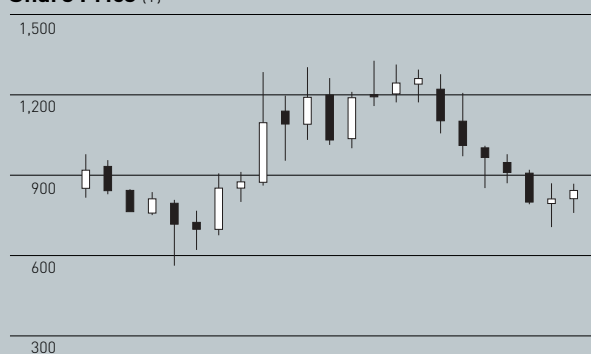


(As of March 31, 2001)

Share Price Range

Year	Month	Yen	
		High	Low
2000	6	¥1,214	¥1,000
	7	1,330	1,158
	8	1,315	1,171
	9	1,297	1,171
	10	1,280	1,055
	11	1,210	970
2001	12	1,011	851
	1	980	869
	2	923	790
	3	872	705
	4	870	758
	5	888	775

Share Price (¥)



Trading Volume (Thousand Shares)

